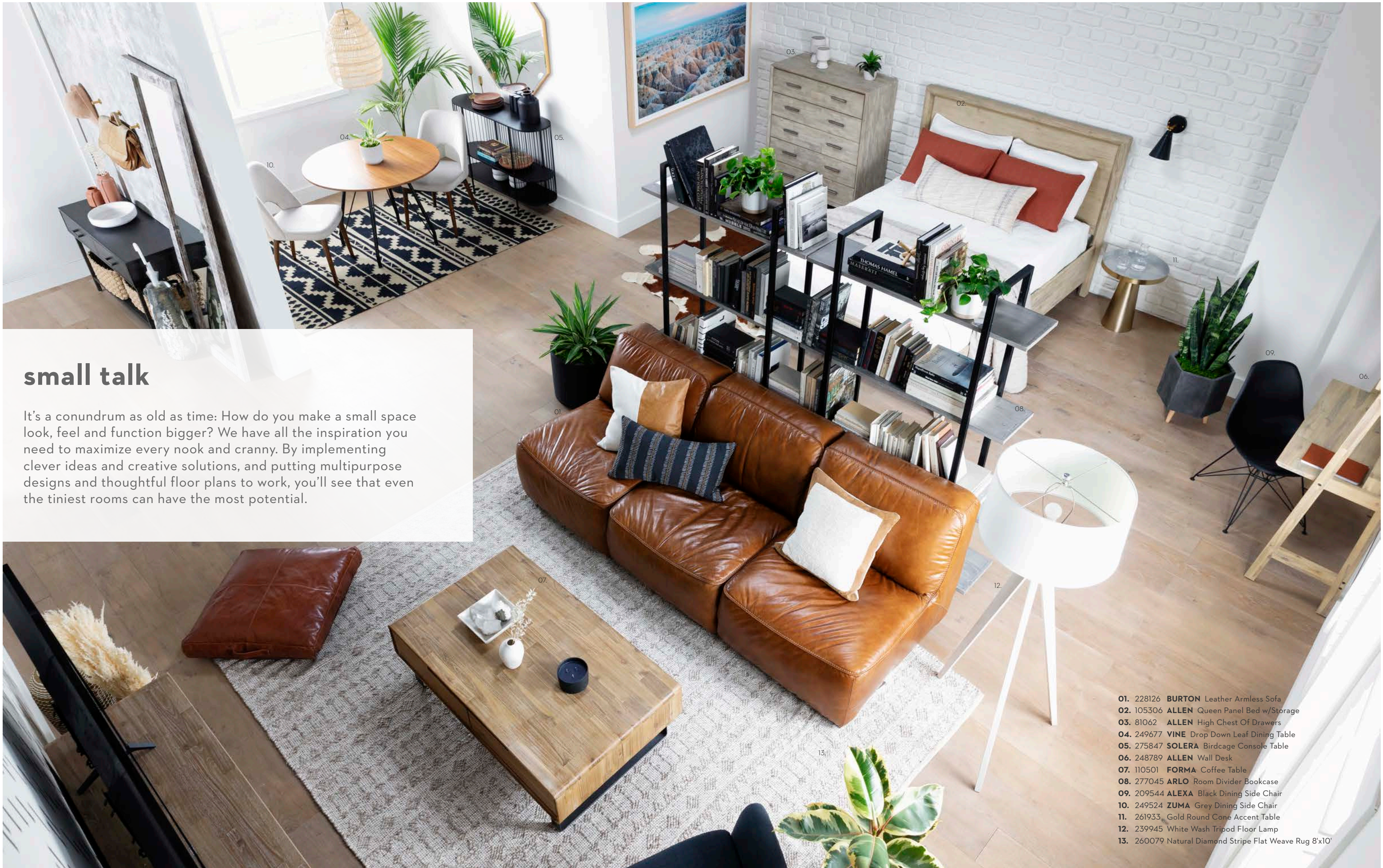


LIVING SPACES

SMALL SPACE FURNITURE CATALOG





small talk

It's a conundrum as old as time: How do you make a small space look, feel and function bigger? We have all the inspiration you need to maximize every nook and cranny. By implementing clever ideas and creative solutions, and putting multipurpose designs and thoughtful floor plans to work, you'll see that even the tiniest rooms can have the most potential.

- 01. 228126 **BURTON** Leather Armless Sofa
- 02. 105306 **ALLEN** Queen Panel Bed w/Storage
- 03. 81062 **ALLEN** High Chest Of Drawers
- 04. 249677 **VINE** Drop Down Leaf Dining Table
- 05. 275847 **SOLERA** Birdcage Console Table
- 06. 248789 **ALLEN** Wall Desk
- 07. 110501 **FORMA** Coffee Table
- 08. 277045 **ARLO** Room Divider Bookcase
- 09. 209544 **ALEXA** Black Dining Side Chair
- 10. 249524 **ZUMA** Grey Dining Side Chair
- 11. 261933 Gold Round Cone Accent Table
- 12. 239945 White Wash Tripod Floor Lamp
- 13. 260079 Natural Diamond Stripe Flat Weave Rug 8'x10'



03.



- 01. 228126 **BURTON** Leather Armless Sofa
- 02. 110501 **FORMA** Coffee Table
- 03. 206465 **MERCURY** Dark Grey Accent Chair
- 04. 239945 White Wash Tripod Floor Lamp

03.

01.

02.



04.

set the scene

One of the keys to achieving small space success is choosing furnishings that help maintain a light, open and airy feeling. Thanks to clean lines, low profiles and minimal details, these designs are able to create the illusion of expanse in any living area. With the right pieces, you can still have it all and plenty of it - seating, surface, storage and style.

media darling

Even in a small space, there's an opportunity for you to make a statement with entertainment. You can bring in a simple yet impactful TV console that does double duty as a foundation for your big screen and a storage hub for your media equipment. This particular design offers the perfect scale and a touch of modern industrial style, which means it's completely focal point worthy.



01. 110500 **FORMA** TV Stand



next level



great heights

When it comes to small space design, the golden rule is to aim high. While you may not have room to spread out, there's freedom to stretch out, and a counter height dining set is the perfect way to do just that. By going vertical, you easily elevate functionality without cluttering or overwhelming an area. Think lofty, think lanky, think lengthy, and you shall enjoy the most efficient layout.

01. 244042 **SORRENTO** 5-pc Counter Set



01.

03.

02.

01. 249677 **VINE** Drop Down Leaf Dining Table
02. 275847 **SOLERA** Birdcage Console Table
03. 249524 **ZUMA** Grey Dining Side Chair

double the function

Designs that work twice as hard are a must in any small space, as they allow you to squeeze the most purpose and practicality out of your room. Thanks to a clever drop-leaf feature, our Vine dining table can function as a desk and transform chic entertaining areas into inspiring offices. Best of all, its modest size and scale ensure you'll encounter zero issues with overcrowding.

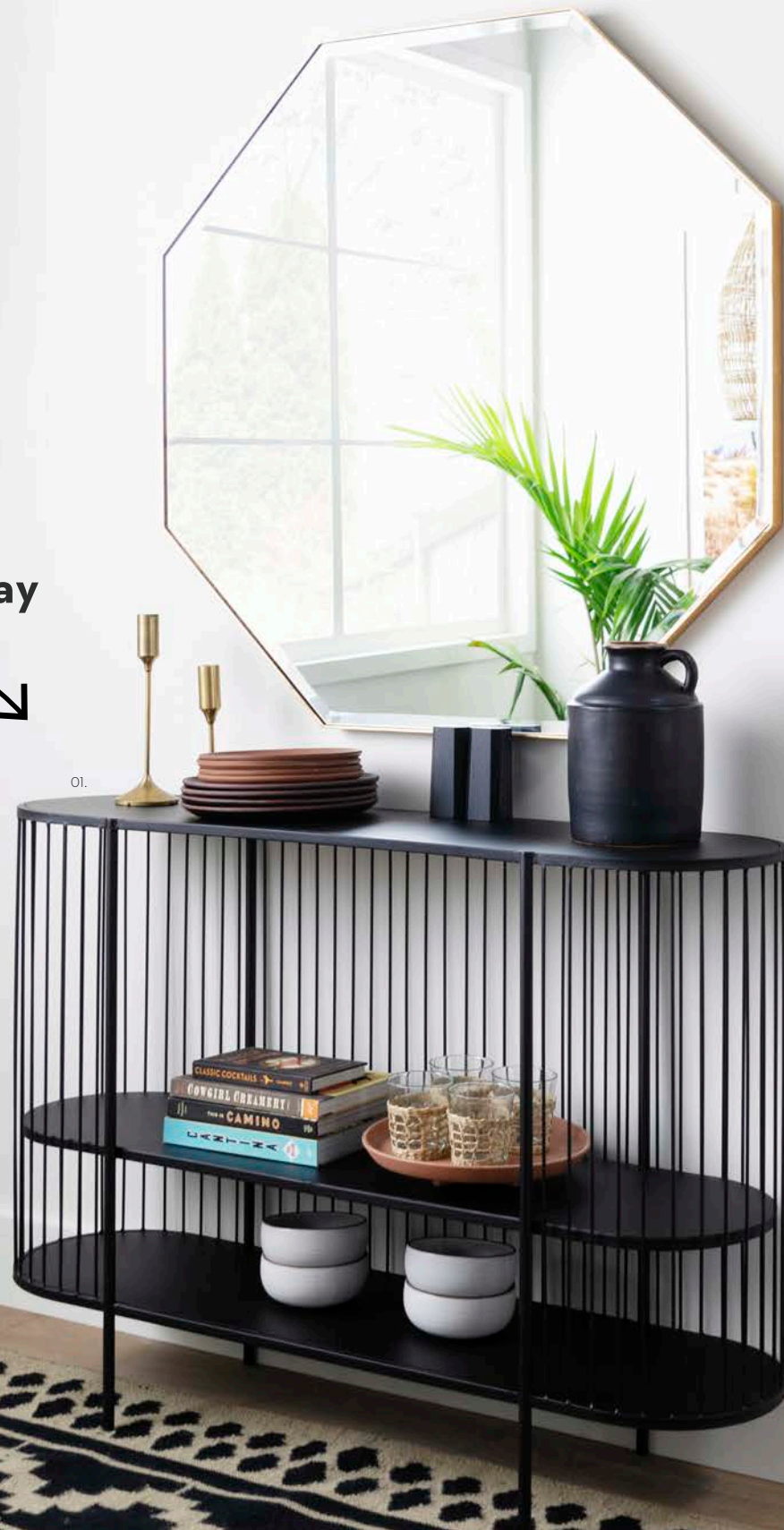
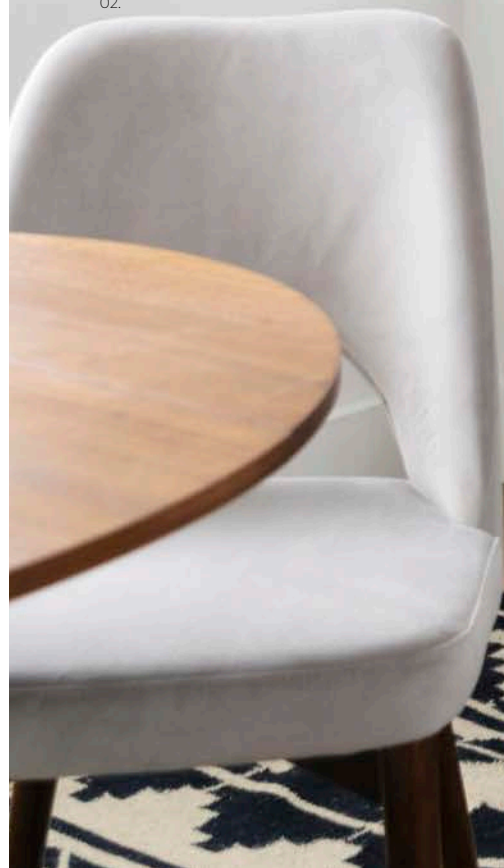


buffet your way



01.

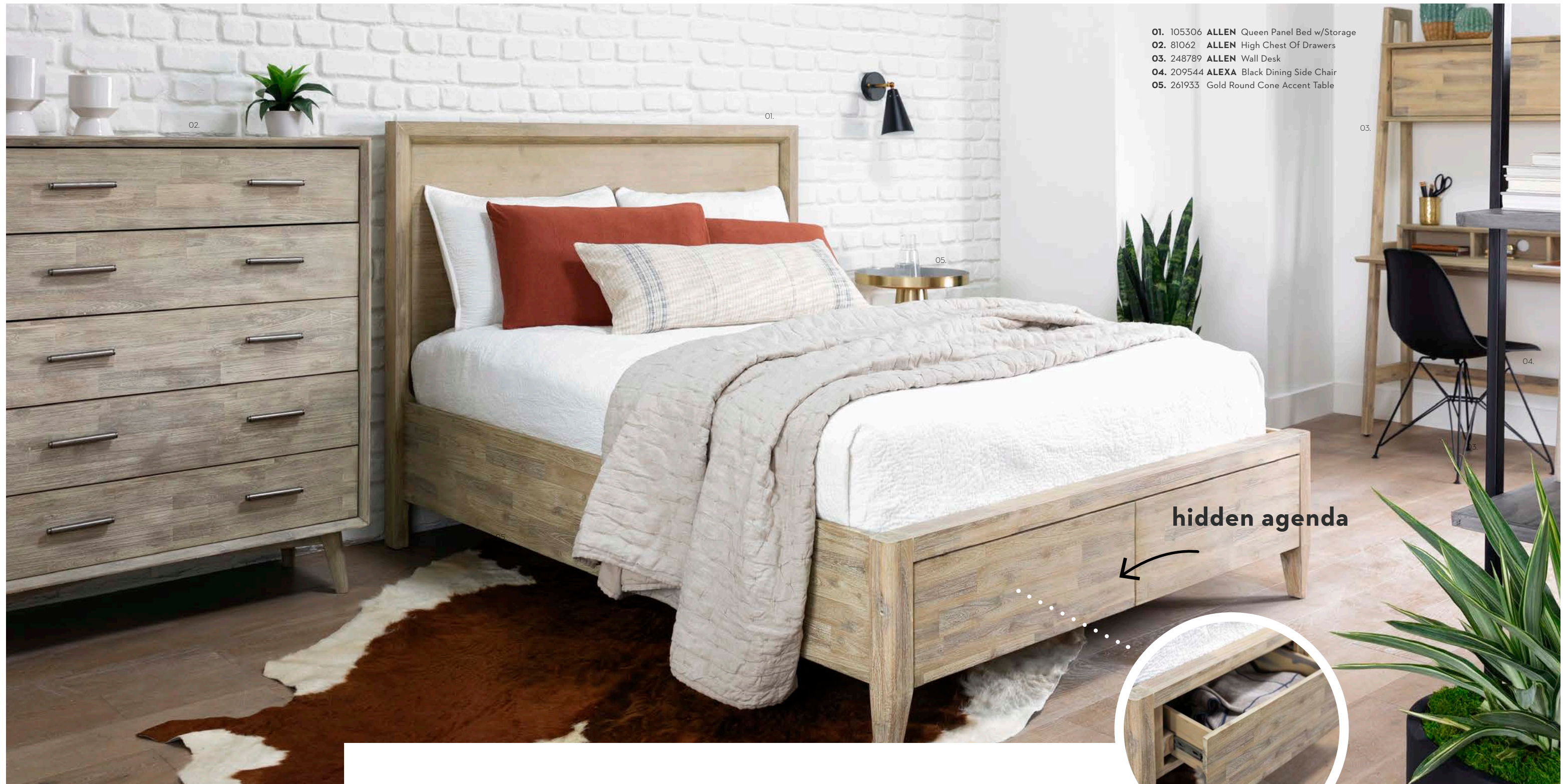
02.



01. 275847 **SOLERA** Birdcage Console Table
02. 249524 **ZUMA** Grey Dining Side Chair

open invitation

Light in scale, heavy in style, this console table serves up major flair and function. The birdcage-inspired design is delicate and airy - perfect for bringing maximum presence and minimal interference to a small space. In addition to storing and showcasing your entertaining essentials, it acts as the grounding force for a striking dining area moment.



- 01. 105306 ALLEN Queen Panel Bed w/Storage
- 02. 81062 ALLEN High Chest Of Drawers
- 03. 248789 ALLEN Wall Desk
- 04. 209544 ALEXA Black Dining Side Chair
- 05. 261933 Gold Round Cone Accent Table

hidden agenda



mini sanctuary

Carving out a restful refuge is imperative . . . especially in a small space. You can still achieve big dreams in limited square feet with pieces that offer a lot of bang for your buck. Here, designs decked in light tones and equipped with plenty of storage get the job done in style.

texture power

Small spaces make the biggest impact when you use all of the elements you have at your disposal. Texture is a heavy hitter, as it allows you to create a lively and layered atmosphere without actually adding more pieces into the mix. Keeping that in mind, opt for designs with materials and finishes that look and feel dynamic.



01. 105306 ALLEN Queen Panel Bed w/Storage
02. 81062 ALLEN High Chest Of Drawers
05. 261933 Gold Round Cone Accent Table



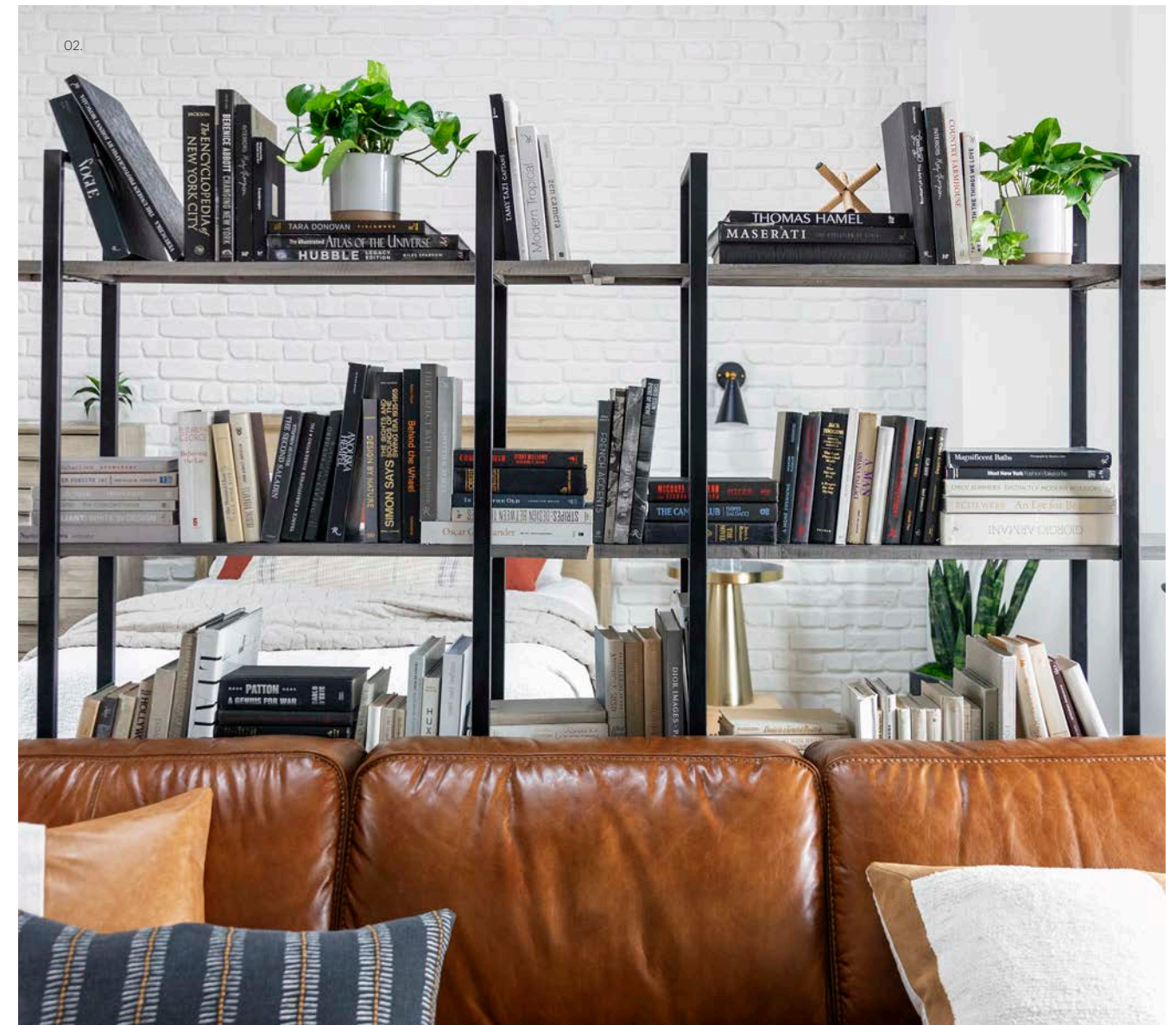
work it out



- 01. 248789 ALLEN Wall Desk
- 02. 277045 ARLO Room Divider Bookcase
- 03. 209544 ALEXA Black Dining Side Chair

top shelf

Utilizing open shelving in a small space allows you to combine functionality and beauty. Not only does it serve the purpose of storing your odds and ends, it lets you showcase what's meaningful to you. There are even room dividers that help separate your home into zones, so you can easily compartmentalize and organize while displaying the items you love most.





262570 Black Metal Starburst Mirror



256392 Foliage Outdoor Accent Pillow 18"



261675 Turquoise Mallet Vase 12"



accessory story

Décor is the heart and soul of any space, so when you're working in tight quarters, be sure to accessorize intentionally. Less is more, but you can still go a little wild with pops of color and pattern.

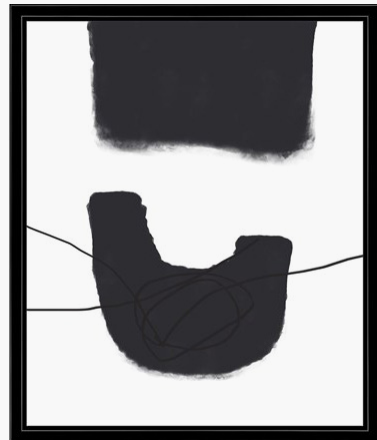


278257 White Wood Planter Set of 3

finishing touches



278138 Black Metal Accent Lamp 20"



277949 Amish Couture II w/ Black Frame



99814 Lime Delco Accent Throw



266527 Wood Sunburst Accent Mirror



282126 Black + Gold Texture Planter Set of 2



265980 Multi Striped Boho Accent Throw



265971 Multi Leaf Accent Pillow

LIVING SPACES

SEE MORE OPTIONS ONLINE

Visit [livingspaces.com](https://www.livingspaces.com) to
check out our entire selection.



01.



02.

Stay connected @livingspaces



01. 249677 **VINE** Drop Down Leaf Dining Table
02. 249524 **ZUMA** Grey Dining Side Chair