


ASSEMBLY INSTRUCTIONS

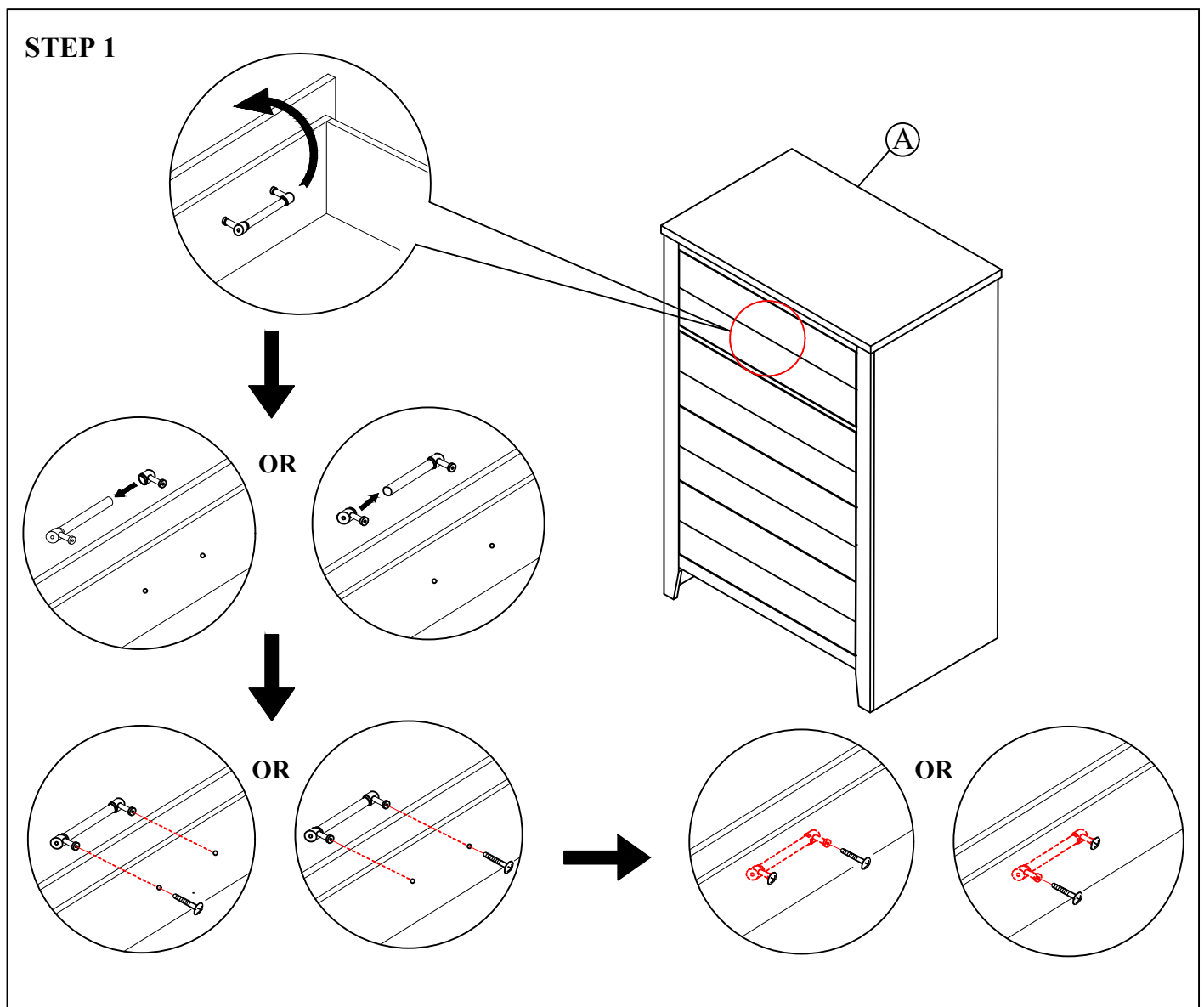
ITEM NO : B8170 - 4 CHEST

BOX OF CHEST

ITEM	DRAWING	DESCRIPTION	QTY
A		CHEST	1



COMPLETED CHEST ASSEMBLY



THE ANTI TIPPING HARDWARE IS LOCATED IN THE TOP DRAWER OF CHEST.

NOTE : MUST TIGHTEN SCREWS PERIODICALLY. WITH USE SCREW MAY BECOME LOOSE.
CHECK TIGHTNESS OF ALL SCREW EVERY 6-8 WEEKS.

CLEANING INSTRUCTION

After assembly, clean & polish the completed parts if necessary with soft cloth and industrial recognized furniture polish

MADE IN MALAYSIA