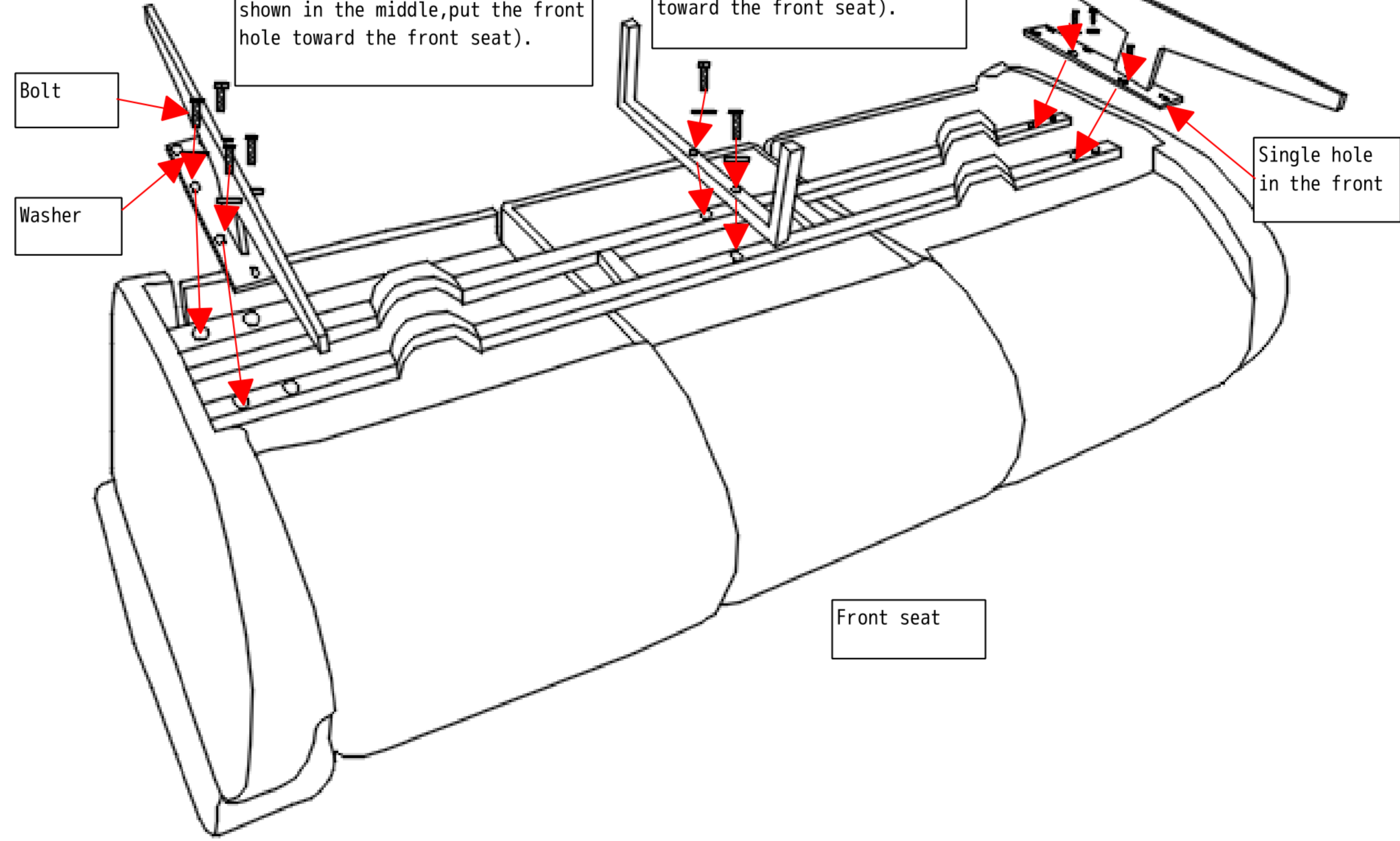


Assembly Instructions for 5080-58

1.Remove the leg and accessories from the seat underneath.

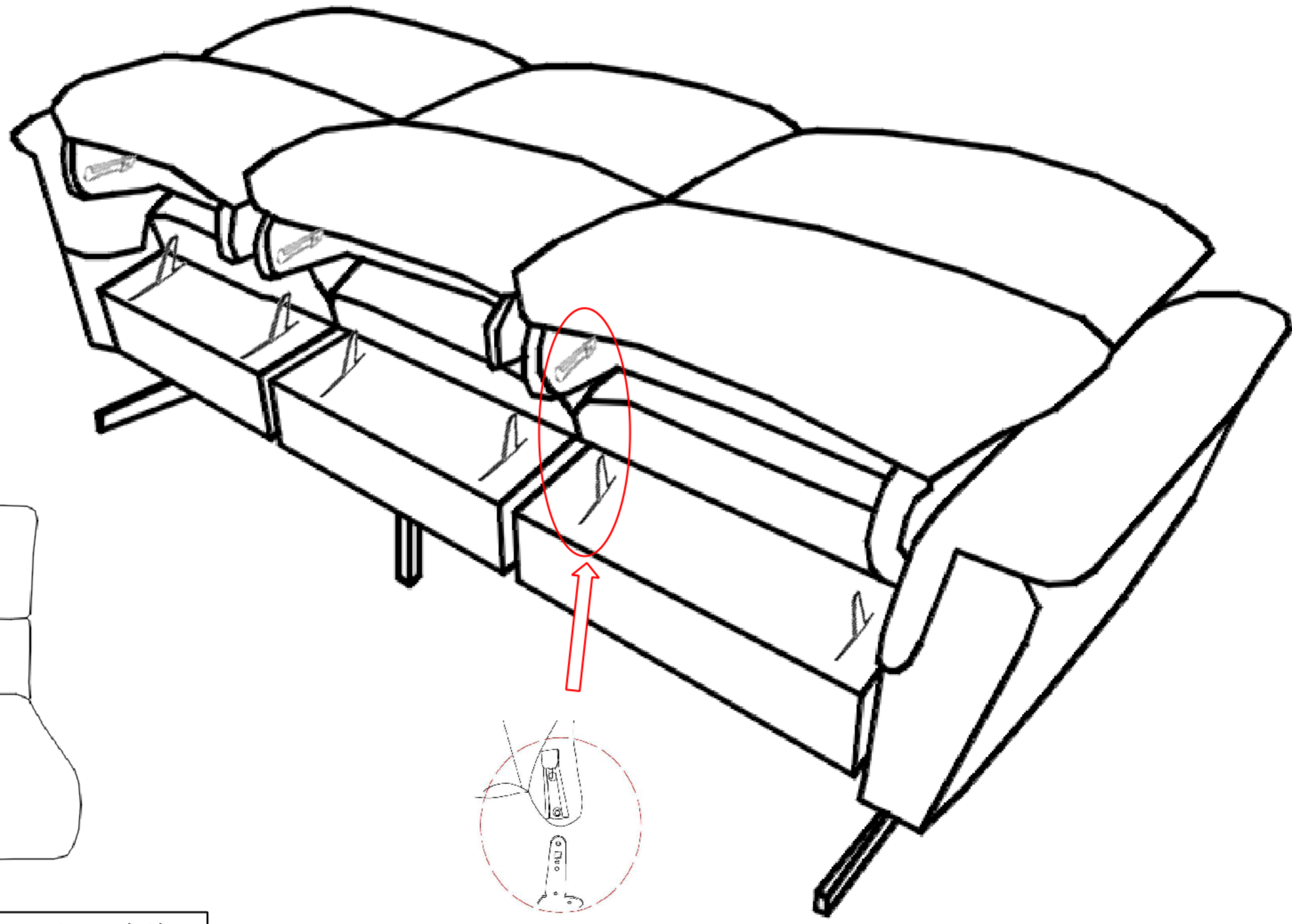
2.Assemble the I-shaped legs onto the mechanism in both sides (Bolted with 4 holes as shown in the middle,put the front hole toward the front seat).

3.Assemble the concave leg onto the mechanism in the middle(Put the short distance from the hole to the edge toward the front seat).



打印说明书的时候，第二页  
打印在背面

Assembly Instructions for 5080-58



Note:Put the side with gap toward the arm.

4.Overtum the back,Slide the metal receiver over the metal post.Press both sides of back firmly downward until locked in place.